

# Croatian Open Championship AOC 2015

October 21th – 25th 2015

JK PRIMOŠTEN - PRIMOŠTEN & CROATIAN SAILING FEDERATION

## SAILING INSTRUCTIONS

### 1. RULES

1.1. The regatta will be governed by the rules as defined in The Racing Rules of Sailing.

1.2. No national prescriptions will apply.

### 2. NOTICES TO COMPETITORS

2.1. Notices to competitors will be posted on the official notice board front of race office in SC Primošten.

2.2. The regatta office is located at the SC Primošten club house.

### 3. CHANGES TO SAILING INSTRUCTIONS

4. Any change to the sailing instructions will be posted before 09:00 on the day it will take effect, except that any change in the schedule of races will be posted by 20:00 on the day before it will take effect. Reassignment ashore of classes to racing areas will be posted before flag D is displayed; see instruction 4.2.

### 5. SIGNALS MADE ASHORE

5.1. Signals made ashore will be displayed with the applicable class flag(s) from the flagpole in front of SC Primošten club house. If no class flag is displayed, the signal will apply to all classes.

5.2. Flag D with one sound means "The warning signal will be made not less than 45 minutes after flag D is displayed. Boats are requested not to leave the harbour until this signal is made".

5.3. When flag Y is displayed ashore, rule 40 applies at all times while afloat. This changes the Part 4 preamble.

### 6. SCHEDULE OF RACES

6.1. Dates of racing are from October 22<sup>th</sup> till October 25<sup>th</sup> 2015.

6.2. Number of races

From October 22<sup>th</sup> till October 25<sup>th</sup> two races per day are scheduled for 470 (M&W), 420 (M&W), Finn, Laser, Laser Radial (M&W) and Laser 4.7 class.

One extra race per day may be sailed, provided that no class becomes more than one race ahead of schedule and the change is made according to instruction 3.

6.3. The scheduled time of the warning signal for the first race for the first class on each race course is 12:00 on October 22<sup>th</sup>, 11:00 on October 23<sup>th</sup> and October 24<sup>th</sup>, and 10:00 on October 27<sup>th</sup>.

6.4. After a long postponement, to alert boats that a race or sequence of races will begin soon, an orange flag will be displayed with one sound for at least four minutes before a warning signal is displayed.

6.5. On the last day of the regatta no warning signal will be made after 15:00 hrs.

7.

### 8. CLASS FLAGS

Class	Class flag
FINN	class logo (insignia) on a white background
420 - M&W	White flag
LASER STANDARD	class logo (insignia) on a white background
LASER RADIAL - M&W	class logo (insignia) on a green background
LASER 4,7	class logo (insignia) on a red background
TECHNO 293	Flag "F" ICS

### 9. RACING AREAS

9.1. Attachment A shows the location of the racing areas.

9.2. Assignments of classes to racing areas will be posted by 09:00 on the day they will take effect.

9.3. The Race Committee (RC in further text) may move a race course to a different racing area. When moving to a new racing area, the RC vessel will display flag L.

### 10. THE COURSES

- 10.1.** The diagrams in Attachment B – Courses show the courses and course designations, including the approximate angles between legs, the order in which marks are to be passed, and the side on which each mark is to be left.
- 10.2.** The course designation and approximate compass bearing to the first mark will be displayed on board on the RC signal boat no later than the warning signal for each class.

**11. MARKS**

- 11.1.** Marks will be as shown in the table below:

**12.**

Class	Mark(s)	Description
420, Laser Standard, Laser Radial, and Laser 4.7	1,2	Yellow cylindrical buoys
	Finishing mark	Red cylindrical buoy
	3S and 3P, 4S and 4P	Red cylindrical buoys
	New marks 1 or 2	Red buoys

Class	Mark(s)	Description
Finn	1	Yellow buoy
Techno 293	1a	Green buoy
	2	Yellow buoys
	Finishing mark	Red buoy
	New mark 1	Red cylindrical buoy

- 12.1.** The starting marks will be RC boats for 420 (M/W), Laser standard, Laser Radial and Laser 4.7..For Finn and Techno 293 class RC boats and Yellow mark.

**13. THE START**

- 13.1.** Races will be started by using rule 26.

- 13.2.** The starting line will be between staffs displaying an orange flag on the RC boats for 420 (M/W), Laser standard, Laser Radial and Laser 4.7. for Finn and Techno 293 class will be between the yellow buoy on the port end and mast displaying an orange flag on the RC boat at the starboard end.

- 13.3.** During a starting sequence, boats whose warning signal has not been made yet, shall avoid the starting area.

- 13.4.** A boat starting later than 4 minutes after her starting signal will be scored Did Not Start. This changes rules A4 and A5.

**14. CHANGE OF THE NEXT LEG OF THE COURSE**

15. Changes of the next leg of the course will be signalled in accordance with rule 33 and as follows:

- (a) To change the next leg of the course towards mark 1 or mark 2, the RC will lay a new mark and remove the original mark as soon as practicable. When in a subsequent change a new mark is replaced, it will be replaced by an original mark.
- (b) To change the next leg of the course towards the gate or finish line, the RC will move the original marks (or the finishing line) to a new position.

**1. THE FINISH**

2. The finishing line will be between a staff displaying an blue flag on a RC boat and the finishing mark.

**3. PENALTY SYSTEM**

4. Appendix P will apply.

**5. TIME LIMITS**

- 5.1.** Mark 1 time limits and target times in minutes are as follows:

Class	Mark 1 time limit (min)	Target race time (min)
420 - M&W	30	60
Laser Standard	30	60
Laser Radial - M&W	30	60
Laser 4,7	30	60
Finn	30	60
Techno	20	40

- 5.2.** If no boat has passed Mark 1 for the first time within the Mark 1 time limit, the race will be abandoned. Failure to meet the target time will not be grounds for redress. This changes rule 62.1(a).

5.3. *Boats failing to finish within 20 minutes after the first boat in their class sails the course and finishes will be scored Did Not Finish without a hearing. This changes rules 35, A4, and A5.*

## 6. PROTESTS AND REQUESTS FOR REDRESS

- 6.1. *Protest forms are available at the race office at the at SC Primošten. Protests shall be delivered there within the protest time limit.*
- 6.2. *For each class, the protest time limit is 60 minutes after either the last boat has finished the last race of the day or after instruction 14.3 has been applied to that race, or AP over A has been signalled afloat or ashore.*
- 6.3. *Notices will be posted no later than 30 minutes after the protest time limit to inform competitors of hearings in which they are parties or named as witnesses. Hearings will be held in the protest room, located at SC Primošten, beginning at the time posted.*
- 6.4. *Notices of protests by the RC or Protest Committee will be posted to inform boats under rule 61.1(b).*
- 6.5. *A list of boats that have been penalized under Appendix P for breaking rule 42 will be posted.*
- 6.6. *Breaches of , SI 10.3, 17, 18, 19, 20, 22, 23 or 25 will not be grounds for a protest by a boat. This changes rule 60.1 (a). Penalties for these breaches and minor breaches of class rules may be less than disqualification if the International Jury (IJ in further text) so decides. The scoring abbreviation for a discretionary penalty imposed under this instruction will be DPI.*
- 6.7. *On the last day of the regatta a request for reopening a hearing shall be delivered as follows:*  
(a) *within the protest time limit if the requesting party was informed of the decision on the previous day;*  
(b) *no later than 30 minutes after the requesting party was informed of the decision on that day. This changes rule 66.*

6.8. *On the last scheduled day of racing a request for redress based on a IJ decision, shall be delivered no later than 30 minutes after the decision was posted. This changes rule 62.2.*

6.9. *Decisions of the IJ will be final as provided in rule 70.5.*

## 7. SCORING

7.1. *Three races are required to be completed to constitute a series.*

7.2. *When fewer than 4 races have been completed in any series, a boat's series score will be the total of her race scores. When 4 or more races have been completed, a boat's series score will be the total of her race scores excluding her worst score.*

7.3. *To request correction of an alleged error in posted race or series results, a boat may complete a scoring enquiry form available at the race office.*

8.

## 9. SAFETY REGULATIONS

9.1. *Competitors in single-handed events shall wear adequate personal buoyancy at all time while on the water, except briefly while changing or adjusting clothing or personal equipment. This changes rule 40.*

9.2. *A boat requesting assistance should attempt to signal by waving an extended arm.*

9.3. *A boat that retires from a race shall notify the RC signal vessel before leaving the course, or when that is not possible, notify the regatta office as soon as practicable after she returns to the harbour.*

9.4. *Boats that are not leaving the harbour to race, shall inform the regatta office prior to the start of the first race of the day.*

## 10. REPLACEMENT OF CREW OR EQUIPMENT

10.1. *Substitution of competitors will not be allowed with-out prior written approval of the race committee.*

10.2. *Substitution of damaged or lost equipment will not be allowed unless authorized by the race committee. Requests for substitution shall be made to the committee at the first reasonable opportunity.*

## 11. SUPPORT AND COACH BOATS

11.1. *Support boats shall not interfere with boats racing or official boats, or create a wake that affects boats racing.*

11.2. *Support boats shall not be positioned:*

11.2.1. *Closer than 50 metres of any boat racing.*

11.2.2. *Within 50 metres of the starting line and marks from the time of the preparatory signal until all boats have left the starting area, or the race committee signals a postponement, general recall or abandonment.*

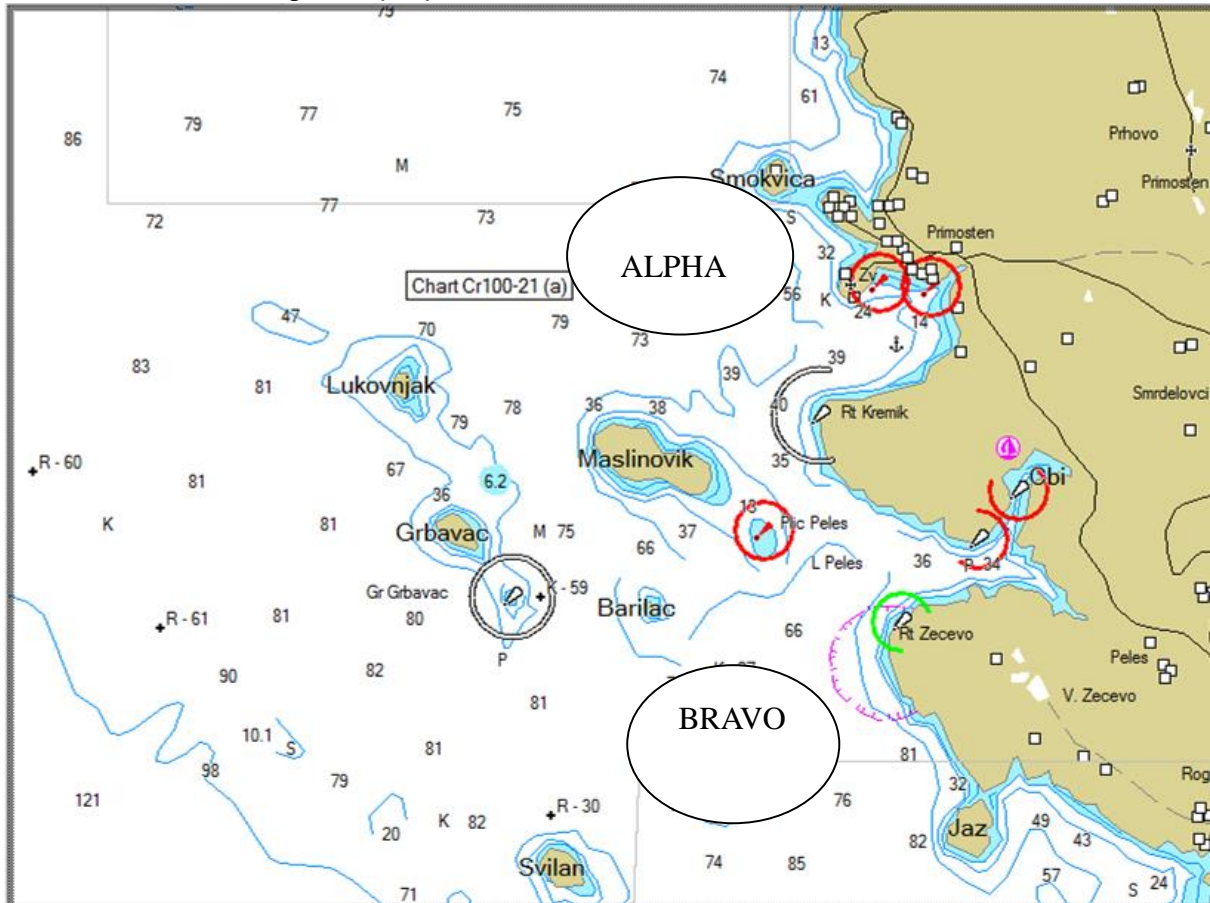
11.2.3. *Between any boat racing and the next mark of the course.*

11.2.4. *Between the inner and outer trapezoid courses when boats are racing on both courses.*

11.2.5. *Within 50 metres of any mark of the course while boats are in the vicinity of that mark.*

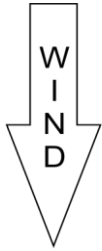
- 11.2.6. *Within 50 metres of the finishing line and marks while boats are finishing.*
- 11.3. *In addition, support boats that are motoring above 5 knots shall remain at least 150 metres from any boat racing.*
- 11.4. *Support boats shall comply with any reasonable request from a regatta official.*
- 11.5. *Each boat carrying coaches and/or support personnel shall display an identification number. Numbered identification stickers will be provided by the organizing authority at registration.*
- 11.6. *Team leaders, coaches, and other support personnel shall register at the registration office before 09:00 hours, October 21<sup>th</sup> 2015 at the SC Primošten.*
12. ADVERTISING
13. Boats shall display advertising supplied by the organizing authority as follows: stickers shall be attached to the hull as described in Regulation 20.
14. OFFICIAL BOATS
15. RC boats for classes 420, Laser Standard , Laser Radial and Laser 4,7 will fly white flags with A letter. RC boats for classes Finn and Techno 293 will fly green flags with B letter. IJ boats will fly white flags with JURY letters. Failure to display flag as prescribed in this instruction will not be ground for redress.
16. TRASH DISPOSAL
17. Rules 55 will apply. Boats shall not put trash in the water. Trash may be placed aboard support and RC boats.
18. BERTHING
19. When ashore, boats shall be kept in the assigned area.
20. HAUL-OUT
21. There will be no haul-out restrictions.
22. RADIO COMMUNICATION
23. Except in an emergency, a boat shall neither make radio transmissions while racing nor receive radio communications not available to all boats. This restriction also applies to mobile telephones.
24. PRIZES
25. As provided in Notice of race
26. DISCLAIMER OF LIABILITY:
27. Competitors participate in the regatta entirely at their own risk See rule 4, Decision to Race. The organizing authority will not accept any liability for material damage or personal injury or death sustained in conjunction with or prior to during, or after the regatta.
28. INSURANCE
29. Each participating boat shall be insured with valid third-party liability insurance with a minimum cover of EUR 500,000 per occurrence or the equivalent.
30. RIGHTS TO USE NAME AND LIKENESS
31. By participating in these events, competitors automatically grant to the Organizing authority and the event sponsors the right, in perpetuity, to make, use, and show, at their discretion, any photography, audio and video recordings, and other reproductions of them made at the venue or on the water from the time of their arrival at the venue, until their final departure, without compensation.

**Attachment A – Racing Areas (SI 8)**



*Assignments of classes to racing areas will be posted as prescribed in SI 7.2. Reassignments of classes to racing areas will be posted as prescribed in SI 4.*

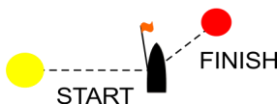
**Attachment B – Courses**  
**Windward leeward course: class, Finn and Techno 293**



1

1a

2



Course Designation **WL**

**FINN**

Start – 1 – 2 – 1 – 2 – Finish

**TECHNO 293**

Start – 1a – 2 – 1a – 2 – Finish

**Trapezoid courses: class 420, Laser Standard, Laser Radial and Laser 4.7**

**Inner Trapezoid**

Course Designation **I2 or I3**

I2: Start – 1 – 4S or 4P – 1 – 2 – 3 – Finish

I3: Start – 1 – 4S or 4P – 1 – 4S or 4P – 1 – 2 – 3 – Finish

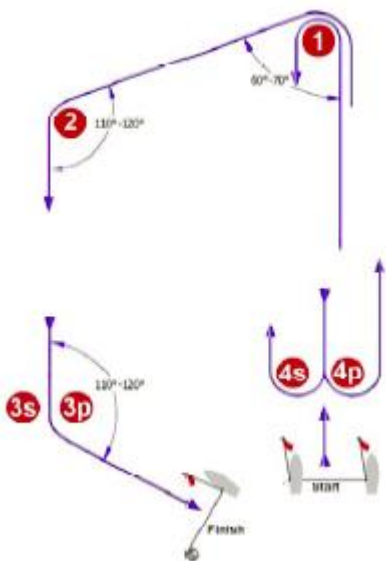
**Outer Trapezoid**

Course Designation **O2 or O3**

O2: Start – 1 – 2 – 3S or 3P – 2 – 3 – Finish

O3: Start – 1 – 2 – 3S or 3P – 2 – 3S or 3P – 2 – 3 – Finish

**I**



**O**

